

# ComLink

Serial, USB & LinkDash connection

## Link ElectroSystems Ltd. Limited Warranties Statement Effective April 5, 1992 5 p.m.

All products manufactured or distributed by Link ElectroSystems Ltd. are subject to the following, and only the following, LIMITED EXPRESS WARRANTIES, and no others:

For a period of one (1) year from and after the date of purchase of a new Link ElectroSystems Ltd. product, Link ElectroSystems Ltd. warranties and guarantees only to the original purchaser - user that such a product shall be free from defects of materials and workmanship in the manufacturing process. A product claimed to be defective must be returned to the place of purchase. Link ElectroSystems Ltd., at its sole option, shall replace the defective product with a comparable new product or repair the defective product. This expressive warranty shall be inapplicable to any product not properly installed and properly used by the purchaser - user or to any product damaged or impaired by external forces. This is the extent of warranties available on this product. Link ElectroSystems Ltd. shall have no liability whatsoever for consequential damages following from the use of any defective product or by reason of the failure of any product. Link ElectroSystems Ltd. specifically disclaims and disavows all other warranties, express or implied including, without limitation, all warranties of fitness for a particular purpose (except for those which apply to product or part thereof that is used or bought for use primarily for personal, family, or household purposes), warranties of description, warranties of merchantability, trade usage or warranties of trade usage.

### Link ElectroSystems Ltd. Licence Agreement

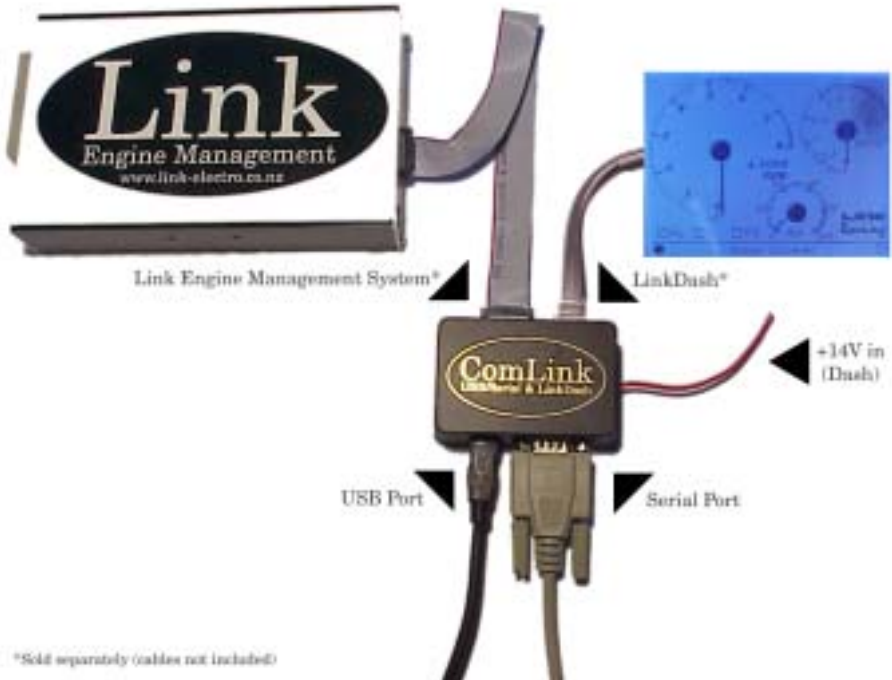
The programme in this system is licensed not sold. Link ElectroSystems Ltd. grants you a license for the programme only in the country where you acquired the programme. You obtain no rights other than those granted under this license. Under this license you may use the programme on only one machine at any one time. If you transfer the Programme you must transfer a copy of this license and all other documentation. Your license is then terminated. You may terminate your license at any time. Link ElectroSystems Ltd. may terminate your license if you fail to comply with the terms and conditions of this license. In either event you must destroy your copies of the programme.

© Link ElectroSystems Ltd

# By Link ElectroSystems Ltd.

# Table of Contents

1. System description .....	3
2. Serial Port / USB Port / Dash Connector .....	4
Serial Port .....	4
USB Port .....	4
Dash Port .....	5
3. Installing USB drivers (Pre-installation) .....	6
4. Completing the Installation .....	8
Advanced Options .....	12



# 1. System description

The ComLink connects your PC and LinkDash display unit to a Link Engine Management System via the USB/ serial port and ribbon cable.

- The ComLink is compatible with any Link ECU (electronic control unit) that has PCLink software.
- The ComLink provides the communication and datalogging features of the SerialLink.

## 2. Serial Port / USB Port / Dash Connector

To ensure the ComLink is recognised correctly by the ECU, it must always be connected to the ECU via the ribbon cable first, before applying power to the Link ECU.

### Serial Port

- ComLink only requires driver installation if the USB connection is to be used. No drivers are needed for connection to the serial port.
- Serial port connection only requires a compatible serial cable connection to PC and ribbon cable connection to a Link Engine Management System. Power is taken from the Link ECU so the ignition key must be on before communications can be established.

### USB Port

**USB Drivers:** ComLink requires drivers to be installed on the PC **BEFORE** ComLink is connected to the PC for the first time. This is called the pre-installation process. Please read the USB driver installation section carefully.

**USB Powered:** The ComLink can be powered from the Link ECU or the PC. Using the USB connection allows the Link ECU to be powered without requiring any external power supply. This means that Link ECU numbers can be uploaded and downloaded on the workshop bench.

**Link shutdown & reset:** Note that some functions on the Link ECU may require the power to be cycled but the ComLink may keep it powered up through the USB port. To reset the Link ECU when using the USB port you must put the key into the off position and unplug the ribbon cable connection to the ComLink. This removes all power to the Link ECU. The serial port connection doesn't require this procedure.

# Dash Port

This port allows the LinkDash display device to receive or request engine parameters from Link ECU via the special 8 pin RJ45 socket on the ComLink.

**Dash Connection:** The LinkDash can simultaneously communicate with a Link ECU and PCLink via the ComLink.

**Dash Power:** To power the dash connect the red wire up to it a switched +12V feed. Ground is taken from ECU so power will be lost if the ECU is disconnected. See wiring diagram



**WARNING:** Do not connect any other device other than the LinkDash to this port otherwise damage may occur be both ComLink and the unknown device.

Only connect the PC to either the USB port or the serial port. Do not connect to both the USB and serial ports at the same time otherwise communications may fail.





Figure 2

**Installation begins.** On Windows XP a warning appears stating that Windows Logo testing has not been passed. Each time this appears just click **Continue Anyway**.



Figure 3

Pre-installation complete, Click **OK**. Now its time to plug the ComLink in for the first time.



Figure 4

# 4. Completing the Installation

After completing section 3 you can now Plug your ComLink into the USB port of the PC.

Once you've connected ComLink to the USB port of your PC you should see the following information appear at the bottom right of your screen.

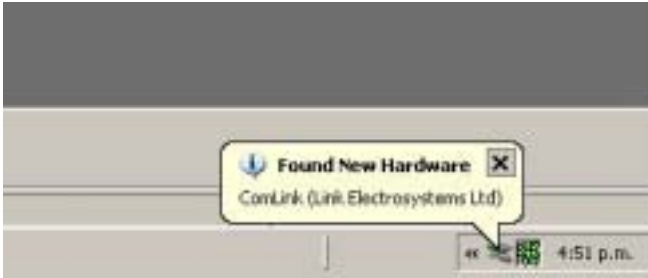


Figure 5.

If the following window appears in figure 6 asking if you want to connect to its Windows Update service. Just choose **No, not this time** and click **Next**.

*It is OK to continue if this window does not appear.*



Figure 6

Use the default **"Install the software automatically"** and click **Next**.



Figure 7.

Windows will now look for the drivers you pre-installed earlier. This should take approximately about 5 to 10 seconds.



Figure 8.

Again, on Windows XP a warning appears stating that Windows Logo testing has not been passed. Each time this appears just click **Continue Anyway**.



Figure 9

Click **Finish**



Figure 10

**The installation process will now repeat this section again. Go back to start of section 4 on page 8 and repeat.**

When complete you should see the following information when installation is successful.

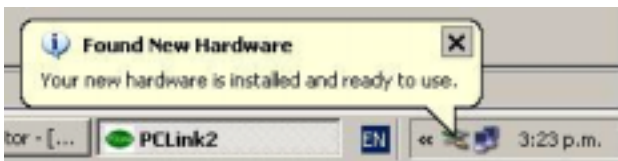


Figure 11

**Installation complete....** A free comport number will be automatically assigned to the ComLink configuration.

# Advanced Options

To check what communications port has been assigned go to the Device Manager in the Control Panel and check that the following item has been added to your ports configuration.

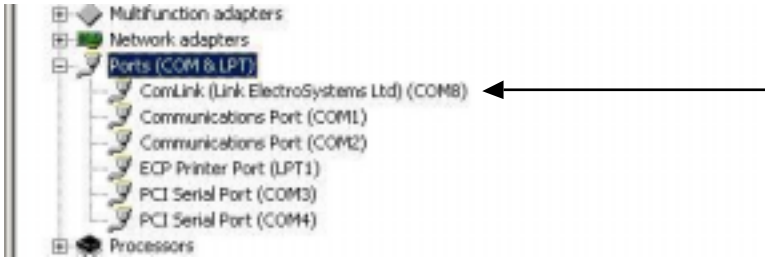


Figure 12

You can change the port that has been assigned by selecting the following

ComLink icon -> Properties -> Port Settings tab -> Advanced -> Com Port No.



Thanks for purchasing your ComLink and any difficulties installing please email the support team on [tech@link-electro.co.nz](mailto:tech@link-electro.co.nz)