



**Link ECU
USB Driver
Installation Instructions**

1 – LINK ECU USB COMMUNICATIONS

To improve ease of connection of Link ECU's to Laptop/Notebook computers, some ECU's are produced with direct USB connection. In order to communicate with the Link ECU, your PC must know how to 'talk the right language'. This is accomplished by installing special driver software on the PC.

This documentation describes the procedure required to install the driver software and configure your PC to communicate with the Link ECU.

NOTE

It is essential that you install the drivers BEFORE connecting your PC to the Link ECU. If the PC is connected before the ECU, Windows will try to install its own drivers that will probably not work.

If you have attempted to connect the PC to the Link ECU without first installing the appropriate drivers, or have trouble installing the drivers (as this procedure is reasonably difficult), contact one of the following sources for technical advice:

- Your nearest Link dealer (a dealer list is available at www.link-electro.co.nz)
- Technical support: tech@link-electro.co.nz

2 – USB DRIVER PRE-INSTALLATION

Due to frequent upgrades, Link ECU USB drivers are not distributed with new ECU's. The latest version of driver software can be downloaded free from:

www.link-electro.co.nz

Drivers are located in the 'Downloads and Software Updates' section of the website. After downloading the driver file, double click on it to run it. This will install the driver installation package on your computer.

It is now necessary to run the driver installation package to install the driver files in the correct locations. To do this:

1. Open "My Computer".
2. Double click on your local drive (usually called 'C').
3. Double click on "PCLink3" to open the PCLink folder.
4. Double click on "Link ECU - USB Drivers" to open the drivers folder. If this folder does not exist then you have not installed the driver installation package described above.
5. Locate the file called "PreInstaller.exe" as shown in Figure 1 and double click on this file. Note that this file may just be named "PreInstaller".

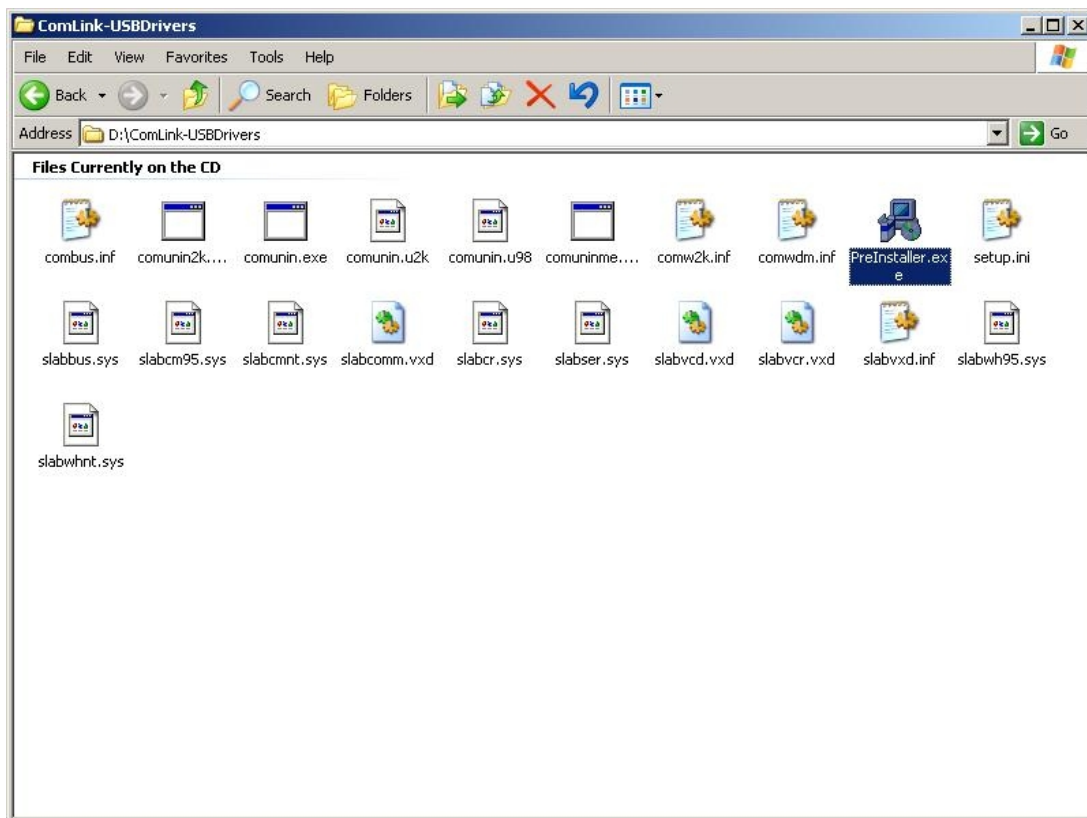


Figure 1 – Driver Installatoin Package Files with “PreInstaller.exe” selected.

6. When the installation window appears as shown in Figure 2, choose the installation location, or just click “Install” to install the drivers automatically.



Figure 2 – Driver Installation Location

7. When prompted by the window shown in Figure 3, click on “Continue Anyway”. This window is just warning you that Microsoft have not personally tested and verified the Link ECU driver package. Note that this warning may not appear at all on some computers.



Figure 3 – Microsoft Warning

8. This warning may appear multiple times. Just keep clicking "Continue Anyway".
9. Pre-Installation is complete when the "Installation Successful" window shown in Figure 4 appears. Click "OK".



Figure 4 – Installation Complete Notification

3 – COMPLETING THE INSTALLATION

After completing section 2 (and only after completing Section 2) you can now connect your Link ECU into the USB port of the PC.

Once you've connected the Link ECU to the USB port of your PC you should see the following information appear at the bottom right of your screen.



Figure 5 – Found New Hardware Notification

If the following window appears in figure 6 asking if you want to connect to the **Windows Update service**, select '**No, not this time**' and click '**Next**'. Note that it is ok to continue if this window does not appear.

Figure 6



Select 'Install the software automatically' as shown in Figure 7 and click 'Next >'.



Figure 7 – Software Installation Options

Windows will now search for the drivers you pre-installed in Section 2 as shown in Figure 8. Note that this may take quite a while in some cases but usually completes in about 5 to 10 seconds.



Figure 8 – Searching for Drivers

If the warning shown in Figure 9 appears, select '**Continue Anyway**', note that this warning may appear several times. This warning is just stating that the Link ECU drivers have not been personally tested by Microsoft.

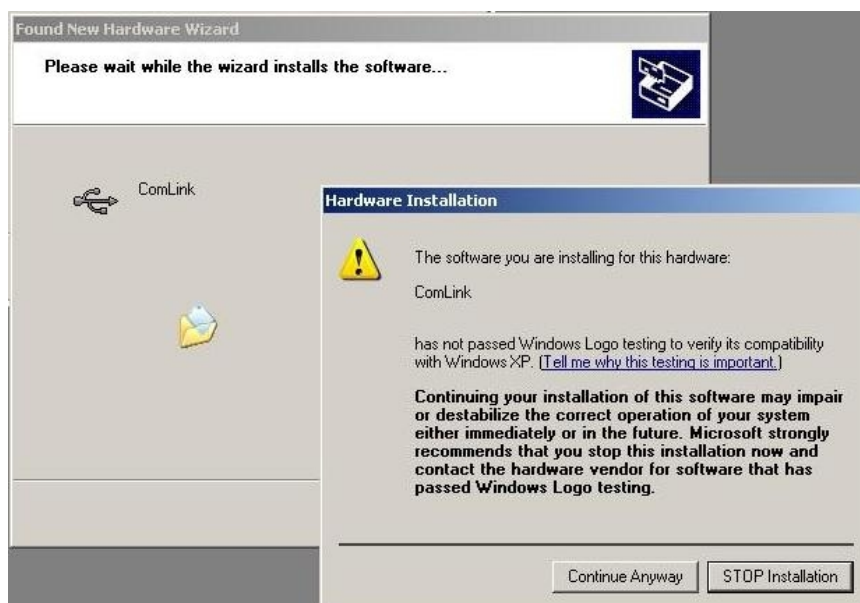


Figure 9 – Microsoft Warning

When prompted that the drivers have been installed as shown in Figure 10, select '**Finish**'.



Figure 10 – Automatic Installation Complete

The installation process will now repeat the procedure described in this section again. Go back to start of Section 3 and repeat.

When complete you should see the following information when installation is successful. Note that in some cases, this notification may not be displayed.

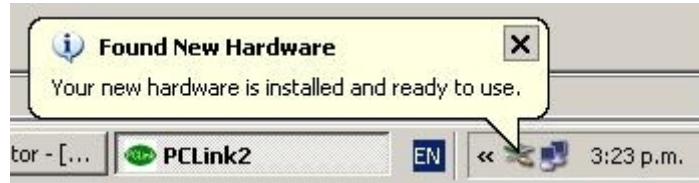


Figure 11 – Installation Completed Successfully

Driver Installation Is Complete... A free COM port number will be automatically assigned to the Link ECU for communications. Your ECU is ready to be tuned!

This COM port number is used by PCLink to determine where to find the Link ECU for communications and must be selected under the PCLink 'Options' (found in the 'Options' menu, refer Figure 12). It is often quickest to just try all the COM Ports listed to see if communications can be established. The actual COM port number assigned to the Link ECU can be determined using the procedure described in Section 4 if required.

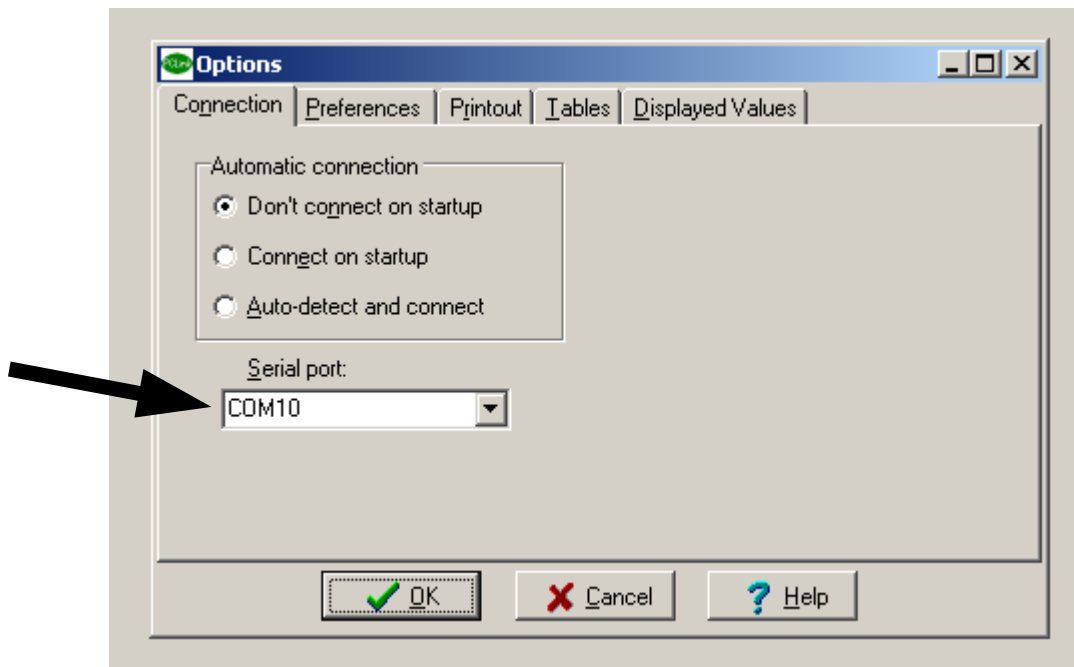


Figure 12 – PCLink Options Dialog

Note: The assigned COM Port number may vary depending the actual USB port that the Link ECU is connected to. Therefore connecting the Link ECU to different USB ports on the same laptop may result in different COM Port numbers being assigned to the ECU. The procedure described in Section 4 can be used to determine the actual assigned COM Port number.

4 – DETERMINING THE LINK ECU COM PORT

To check which communications port (COM Port) has been assigned to the Link ECU use the following procedure:

1. Open the 'Control Panel', (usually found under 'My Computer' or in the 'Start' menu).
2. Double click on 'System'.
3. Click on the 'Hardware' tab.
4. Click on 'Device Manager'.
5. The device manager should open, displaying a list of the computers hardware.
6. Click on small + symbol beside 'Ports (COM & LPT)'. The list should expand to show the computers COM Ports (Refer Figure 13). Note that each computers list will be different depending on the installed hardware.



Figure 13 – COM Port List

Somewhere in the COM Port list should be an entry labelled 'ComLink' or 'Link ECU' or similar. This is the device you are interested in. Take note of the COM Port number in brackets after the entry (COM8 in Figure 13). This is the COM Port that you will select in the PCLink Options.

Note:

If there is no entry in the COM Port List for a Link product, or the 'Ports (COM & LPT)' item does not exist, then driver installation has failed. Contact one of the technical support options listed in Section 1 for further assistance.

